



Work Session
MetRec TV Operations
Almont, CO
November 16, 2022

Work Session Agenda
Wednesday November 16th, 2022

Time	Agenda Item
5:00 PM	Call to Order
5:02 PM	Almont TV Operations Presentation <ul style="list-style-type: none">• MetRec TV Operations Policy• Almont Cable TV Service• Almont TV Viewership Survey Results• Comstock Over-the-Air TV Service
5:15 PM	Board & Public Discussion
5:45 PM	Adjourn

MetRec TV Operations Policy



Gunnison County Metropolitan Recreation District
Translator System Operations Policy
July, 2021

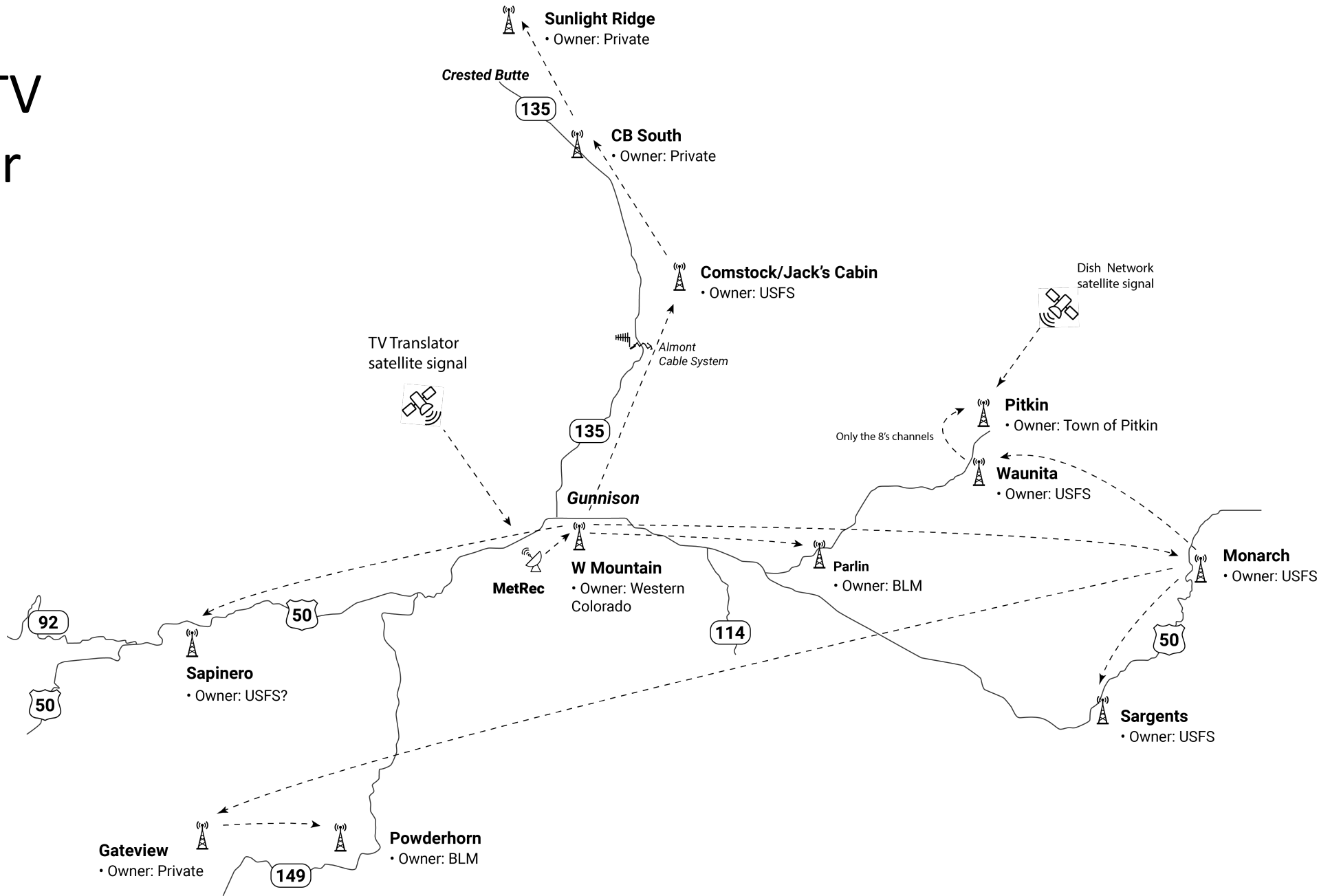
Purpose – It’s a transparent process to guide MetRec’s staff and board decision points for decommissioning a TV Translator site.

MetRec held four public work sessions between January and July 2021 to garner community input about its TV Translator System.

Decommission Process – Sites that serve less than 5% of the total residential units will be considered for decommissioning when capital upgrades are required based on MetRec’s 2020 TV Viewership Survey.

- **Phase 1** – Certified mail TV Viewership Survey to reassess the number of residents served by the translator site
- **Phase 2** – Certified mail TV Viewership notification about the site’s status.

MetRec TV Translator Site Map



MetRec 2020 TV Viewership Survey Results

Translator Site	Number of Residential Units Served by a Translator Site (approximate)	% of Total Residential Units Served	# of Household Respondents to 2020 Viewership Survey	% of Total Household Respondents to 2020 Viewership Survey
W Mountain	4,051	42.5%	207	63.5%
Sunlight Ridge	3,271	35%	37	11%
CB South	1,096	12%	38	12%
Jack's Cabin	313	3%	5	1.5%
Pitkin Townsite	210	2%	20	6%
Powderhorn	202	2%	2	1%
Sapinero	143	1.5%	6	2%
Sargents	66	1%	3	1%
Parlin	58	0.5%	3	1%
Waunita	57	0.5%	4	1%
Monarch	N/A	N/A	N/A	N/A
Gateview	N/A	N/A	N/A	N/A
TOTAL	9,467	100%	325	100%

Table 1. Residential units served by translator site and household respondents to 2020 Viewership Survey. *Note: The first four translator sites listed (W Mountain, Sunlight Ridge, CB South and Jack's Cabin) serve over 90% of the total residential units and over 85% of total household respondents to the 2020 Viewership Survey. The remaining eight translator sites serve less than 10% of the total residential units and 12% of the total household respondents to the 2020 Viewership Survey.*

Cumulative Operations Cost & Number of Household Viewers

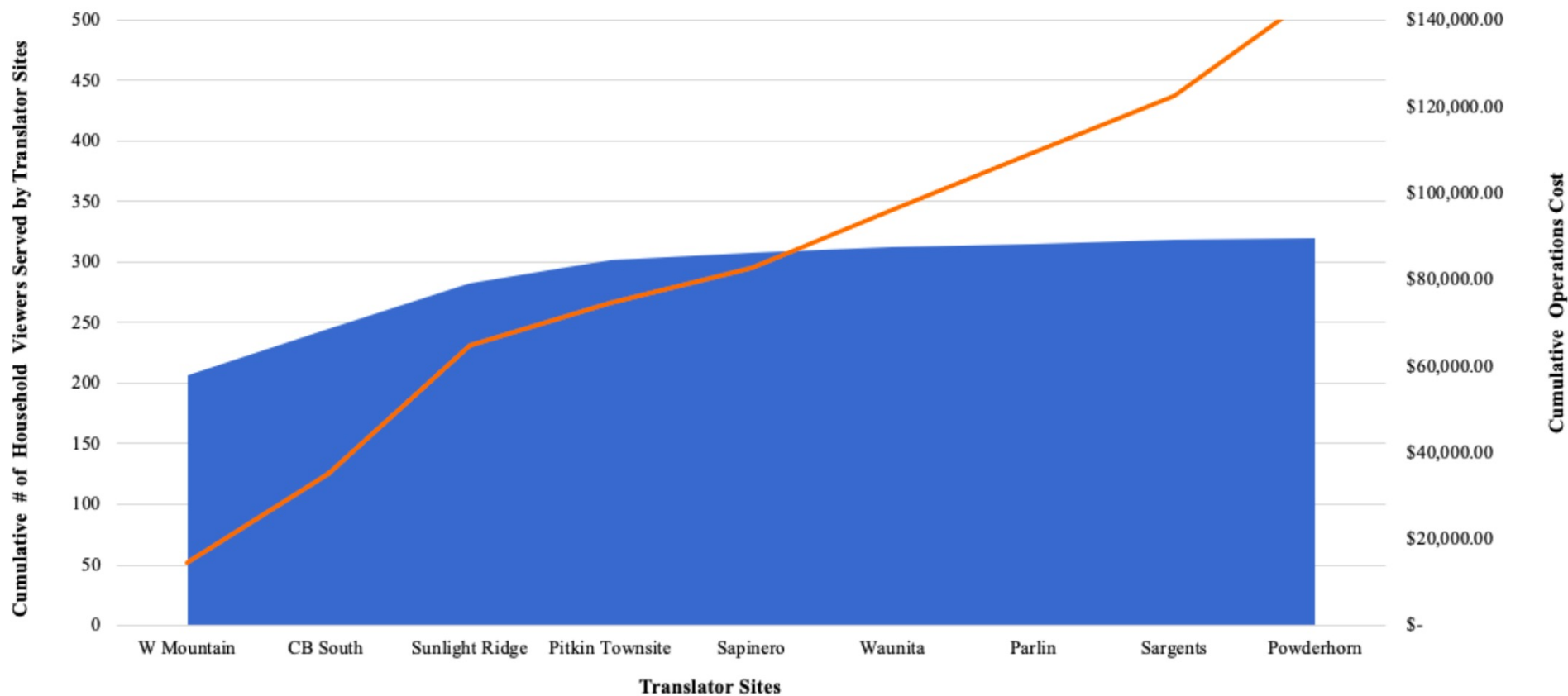


Figure 1. Shown in this figure is the cumulative operations cost (orange) to maintain a translator system that includes all or some of the existing translator sites. It also depicts the cumulative number of household viewers (respondents to 2020 Viewership Survey) served by translator sites (blue). ***Note: The operations cost (orange) increases significantly with each additional translator site, while the number of household viewers served does not (blue).***

Cumulative Operations Cost & Number of Residential Units Served

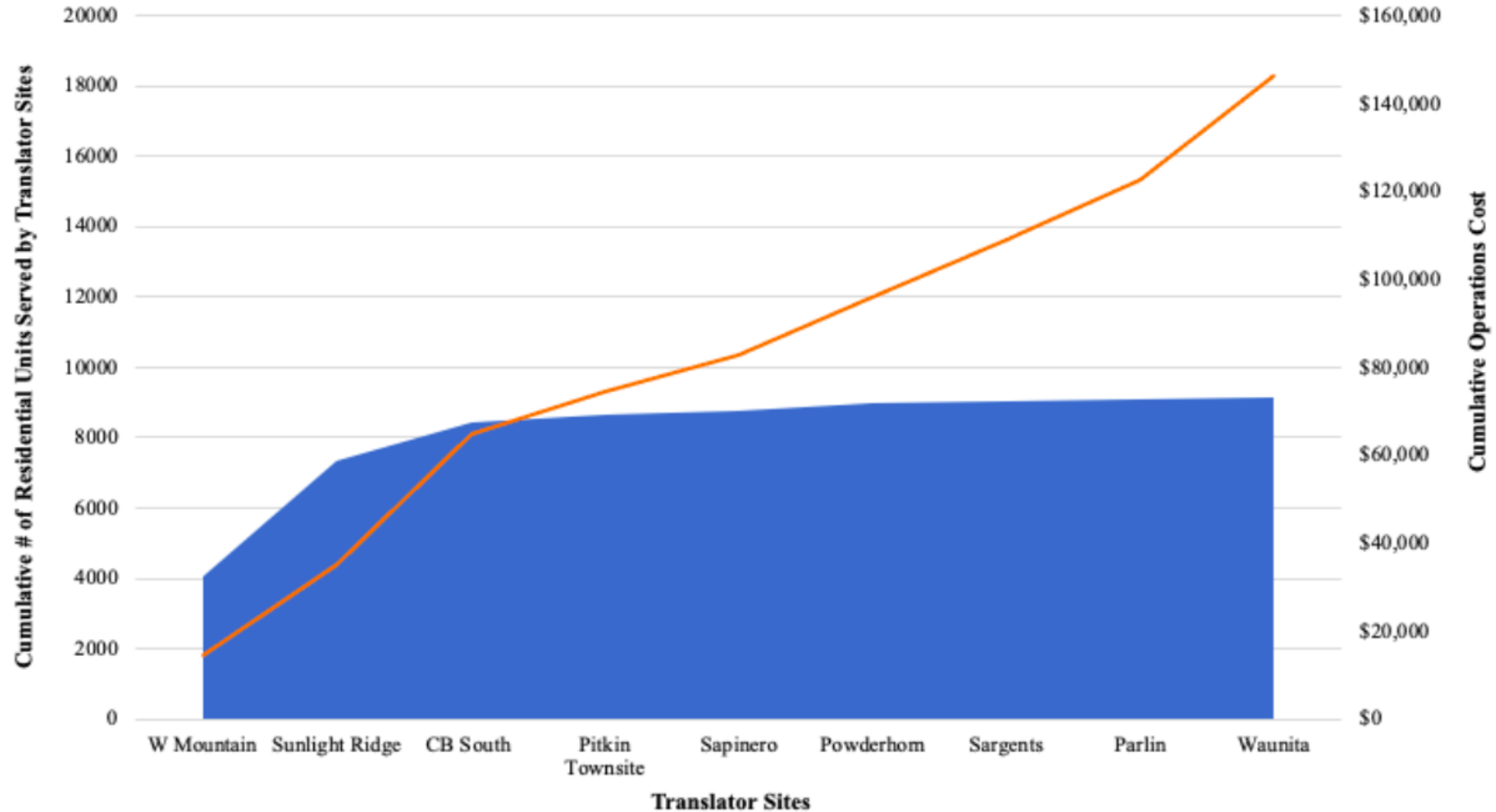
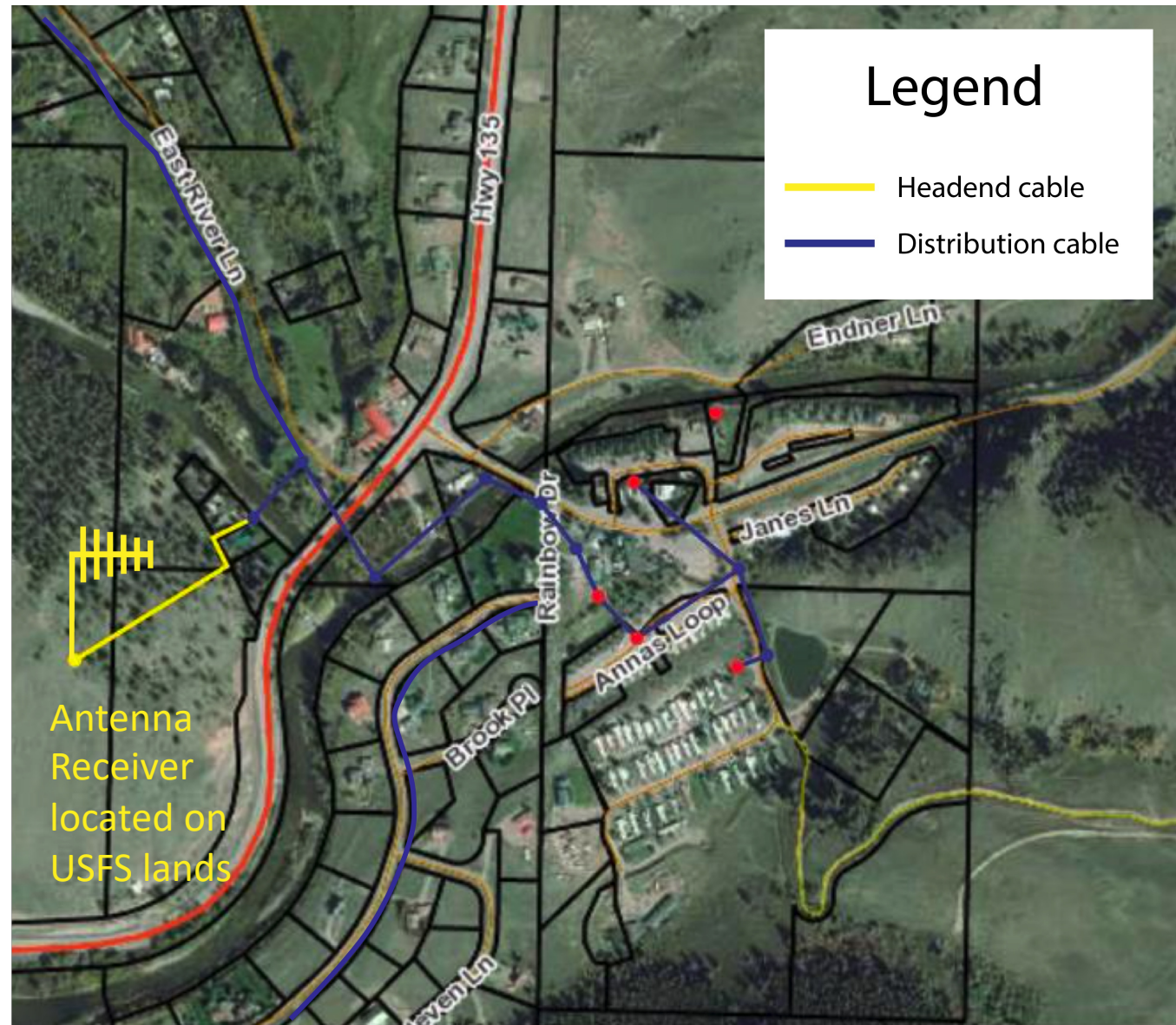


Figure 2. Shown in this figure is the cumulative operations cost (orange) to maintain a translator system that includes all or some of the existing translator sites. It also depicts the cumulative number of residential units served by translator sites (blue).

Almont TV Cable Service

Almont TV Cable Service Map



Almont TV Cable Service History

- A prior owner installed the Almont cable system.
- MetRec began maintaining it in 1979 when the District was founded.
- There has only been sporadic work on the system since.
- There is no documentation on the operational cost.
- In 2021, the MetRec Engineer, District Manager, and Board Chair performed a site visit to inspect the cable system.
- It was clear that the system had become obsolete.

Almont TV Cable Service Challenges

- Unauthorized receive antenna
 - There is no lease agreement with the USFS for the antenna
- Lack of utility easements/agreements for private property
 - Cable crosses over five private properties and HWY 135
- Poorly engineered infrastructure is nearing the end of life (approaching 50 years).

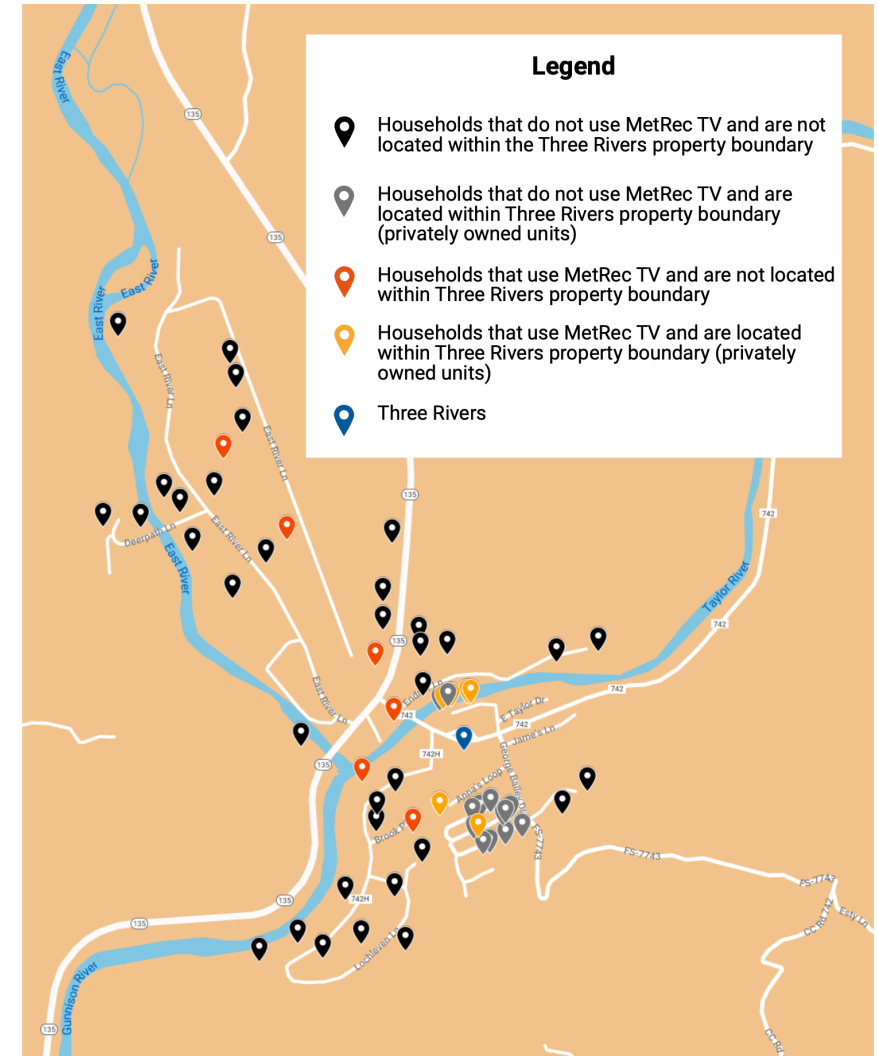
Almont TV Viewership Survey Results

Almont TV Viewership Results

MetRec Almont TV Viewer Survey Results Map

November 3, 2022

Item	Count
Certified Mailings	192
Responses	60
Household Viewers	12
Three Rivers (Three Rivers receives the input and distributes the output to individual users.)	1



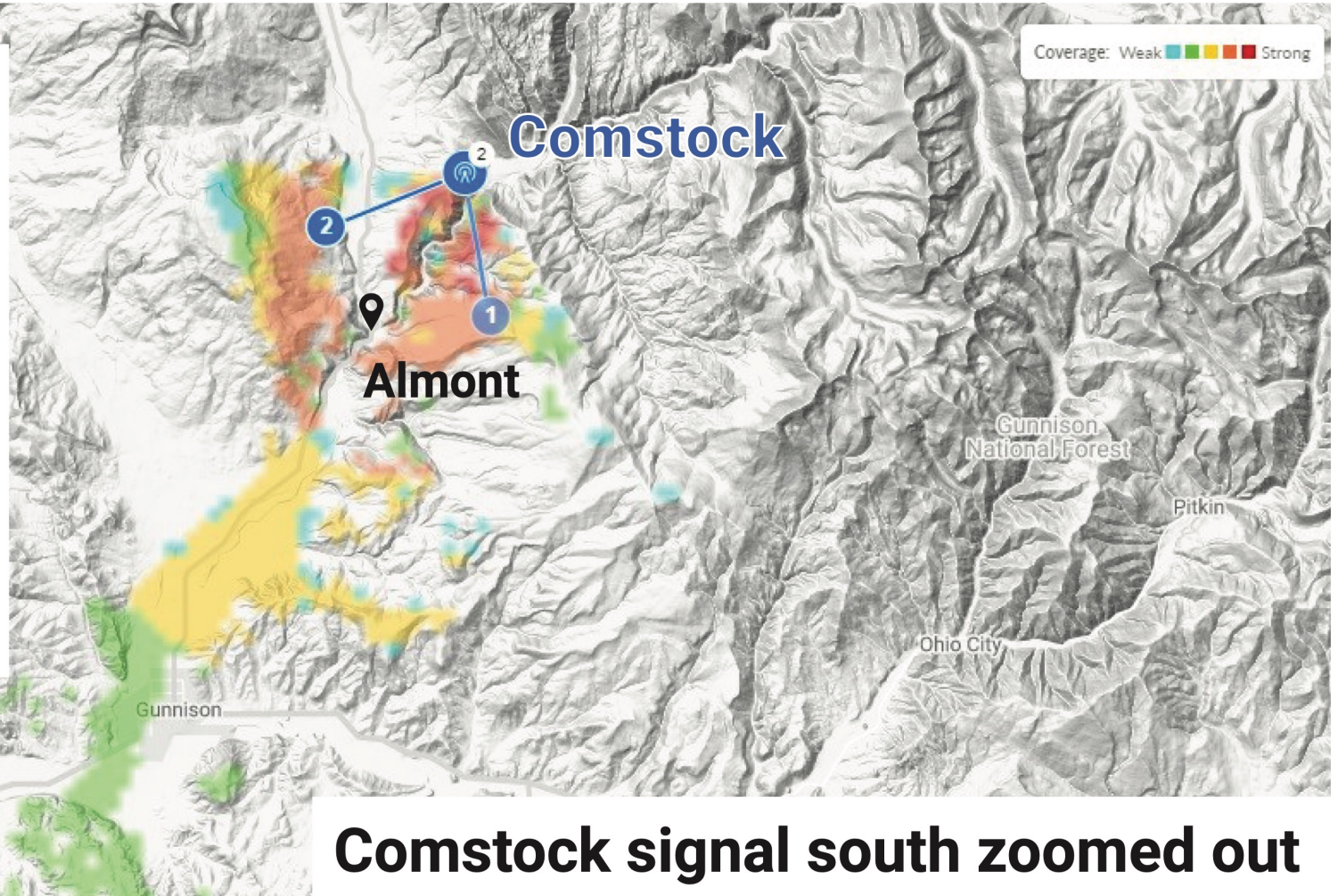
Almont Cable Upgrade Estimated Cost Per Viewer

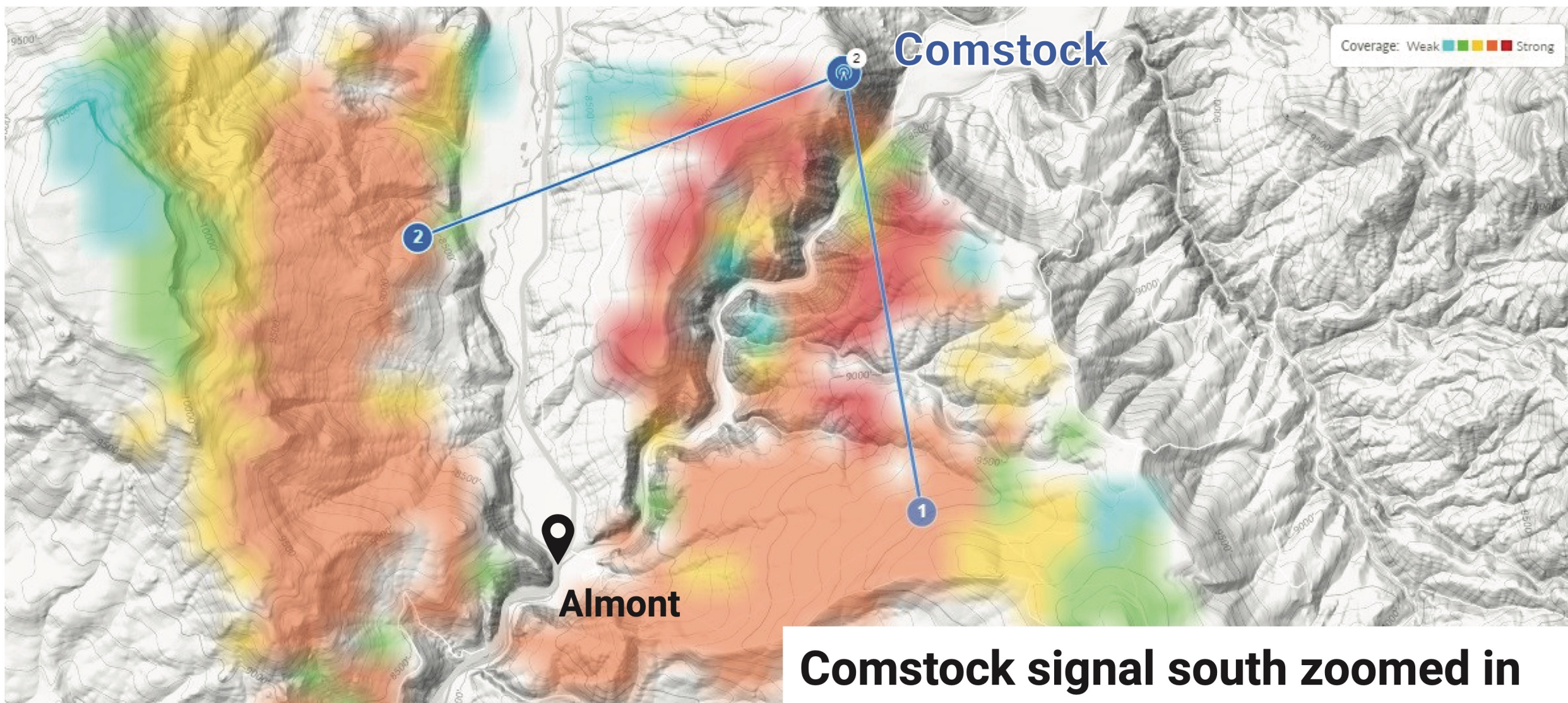
Item	Costs
Headend Upgrade – Antenna to Distribution Amplifier (Engineer, NEPA EA, Submit USFS Lease Application, Obtain Easements, Legal, Build)	\$50,000
Replace Cable and Equipment (Overhead cable for East River Land & Three Rivers, buried cable in Rainbow's end)	\$200,000
Total	\$250,000
Number of Viewers	13
Cost Per User	\$19,230

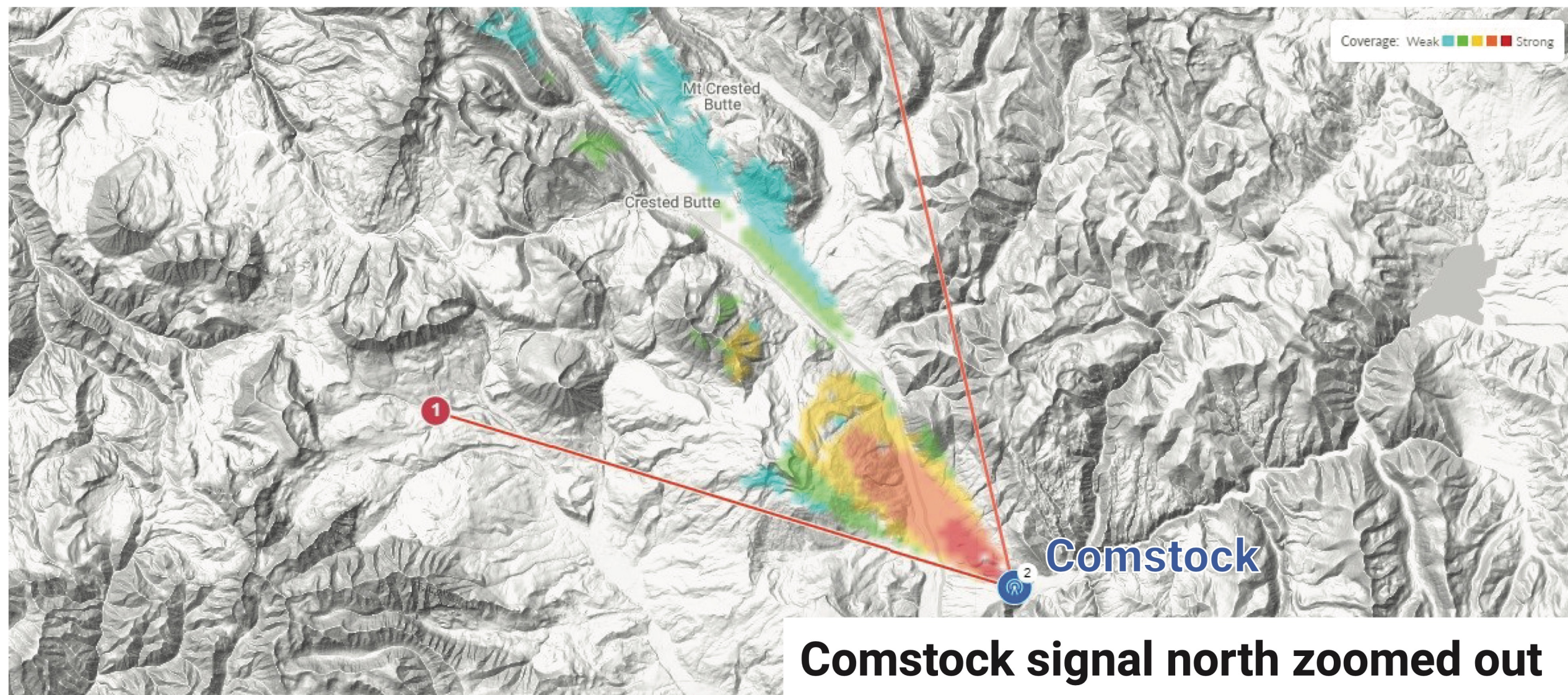
Comstock Over-The-Air Service

Overview

Maps depict locations that have a line of sight to Comstock. Blue circles represent the beam pattern. Reception may be possible nearby from reflections and will be dependent upon viewers' antennae system and location.







Comstock signal north zoomed out

Thank You!
Discussion

